



Foundation At a Glance

Who is Foundation Housing Limited?

Formally established in 2006, Foundation Housing builds on a legacy of community impact dating back to 1986.

Today, we're one of WA's leading community housing providers, delivering strong outcomes in social & affordable housing, & tenant wellbeing statewide.

Mission *To provide affordable housing options for Western Australians on low to moderate incomes.*

Purpose *To improve people's lives with safe and secure housing.*

Vision *A home for everyone*

Values

Solution Focused

We work together to find solutions that benefit our people and customers.

Caring

We care for others and display empathy, fairness and respect.

Honest

We act with integrity and own our decisions.

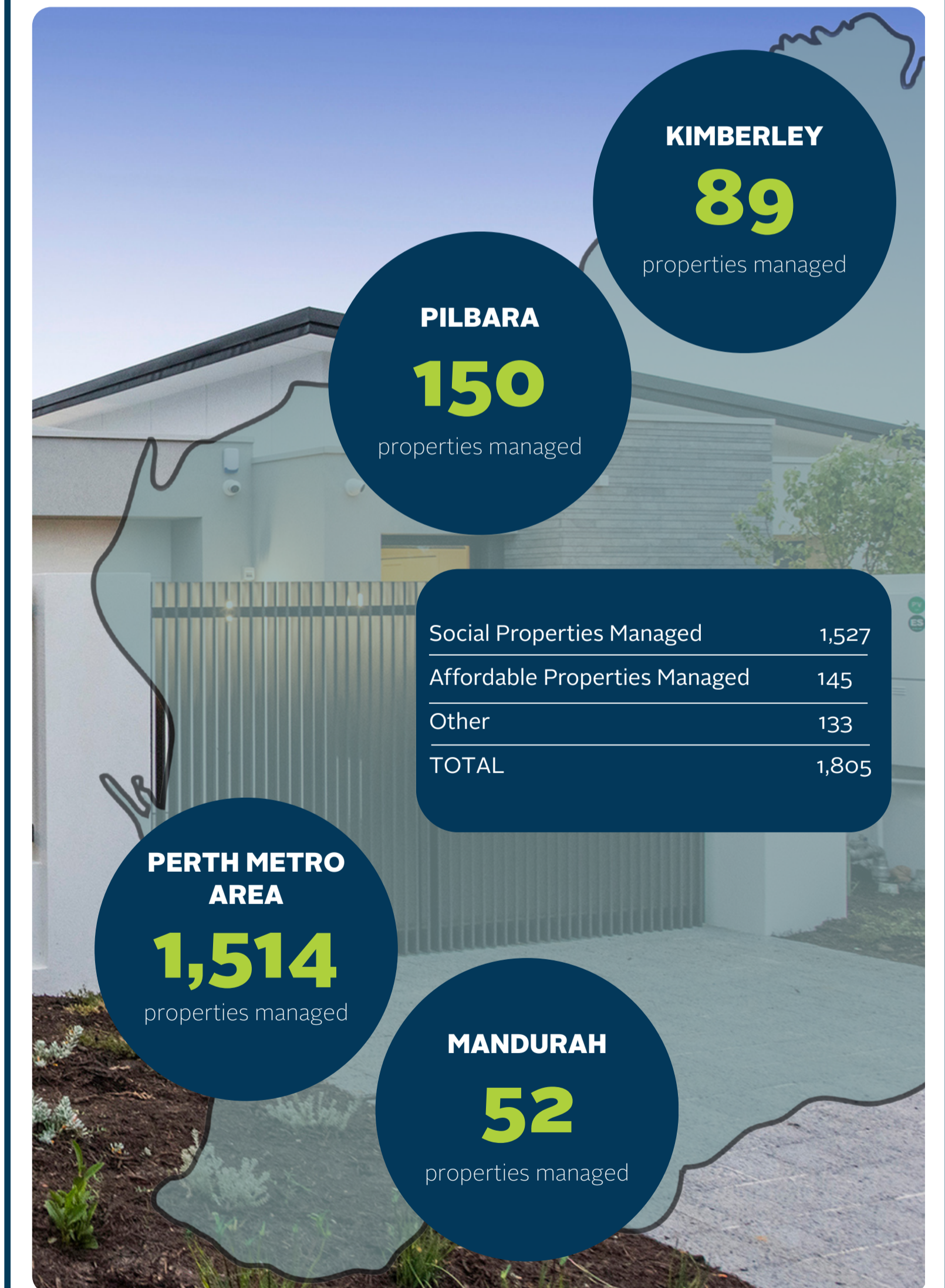
Positive Tenancies Framework

Our award-winning Positive Tenancies Framework supports longterm housing stability by connecting tenants to early intervention, tailored support, & community-based services — empowering them to sustain their tenancy and thrive.



Our Impact

3,500 people homed across Perth, Broome and Pilbara regions





Proposed Development East Street, East Fremantle

How does Foundation Housing provide housing?

Foundation Housing receives its project funding from government and lending institutions. Foundation Housing aim to deliver housing in locations with access to public transport, employment, and quality facilities for recreation, culture, hospitality, health and education.

How does Foundation Housing manage tenancies?

Foundation Housing manages tenancies through our Positive Tenancy Framework, which supports our strategic goal of maintaining and sustaining successful tenancies by focusing on respectful relationships, early support, and proactive communication with tenants.

What is DevelopmentWA's role in this project?

DevelopmentWA, on behalf of the State Government, is overseeing the development of the East Street project as part of its broader program to increase the supply of affordable and social housing.

What is being proposed for East Street?

The current proposal is for an apartment development of three levels, with 34 apartments for social housing.

The development will be 100% social housing to provide homes to those most in need, and leverage Commonwealth funding through the Housing Australia Future Fund Round 2 funding. This will include 19 one-bedroom and 15 two-bedroom apartments.

What is social housing?

Social and affordable housing provides safe, secure, and stable homes for people — supporting individuals and families to thrive and participate in strong, inclusive communities.

Social housing is secure housing, offering deeply subsidised rent based on income for those in greatest need.



- Legend**
- Site
 - Retail & Commercial
 - Community Facilities
 - Public Open Space
 - Education
 - Walkability Zone
 - Transport
 - Bus Stops
 - Bus Routes
 - Cycling Routes
 - Train Line

Want to stay up to date?

You can register for project updates on the Foundation Housing website. Just scan the QR Code or visit <https://www.foundationhousing.org.au>

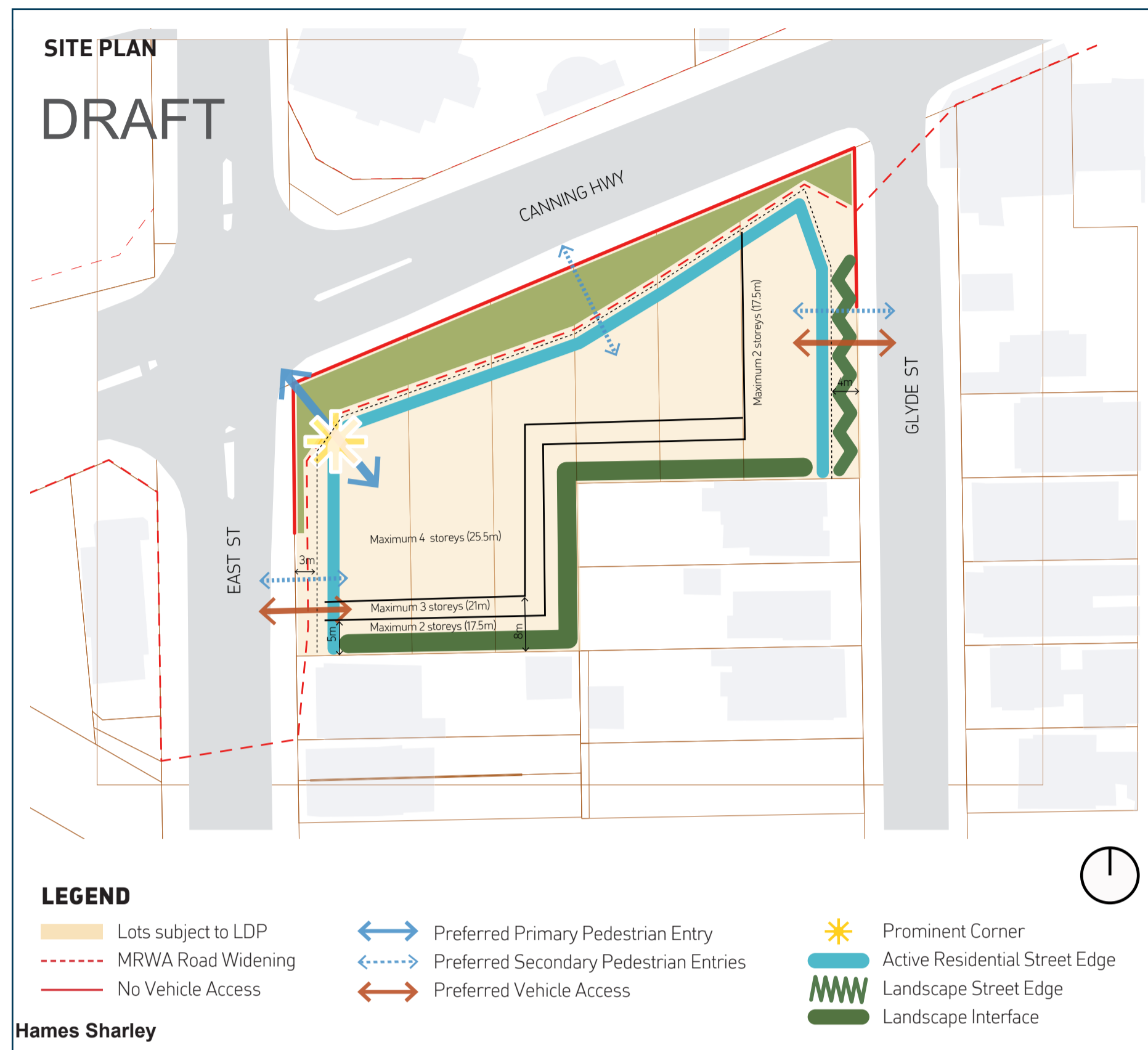


Proposed Development East Street, East Fremantle

These images are Draft and may be subject to change.

Changes may be made to the design prior to the development application being lodged with the Western Australian Planning Commission by early 2026.

The designs may be subject to change during the development application process.



Indicative site plan



Indicative design looking west along Canning Highway towards Fremantle Port



Indicative design looking south from Canning Highway towards the front of the development



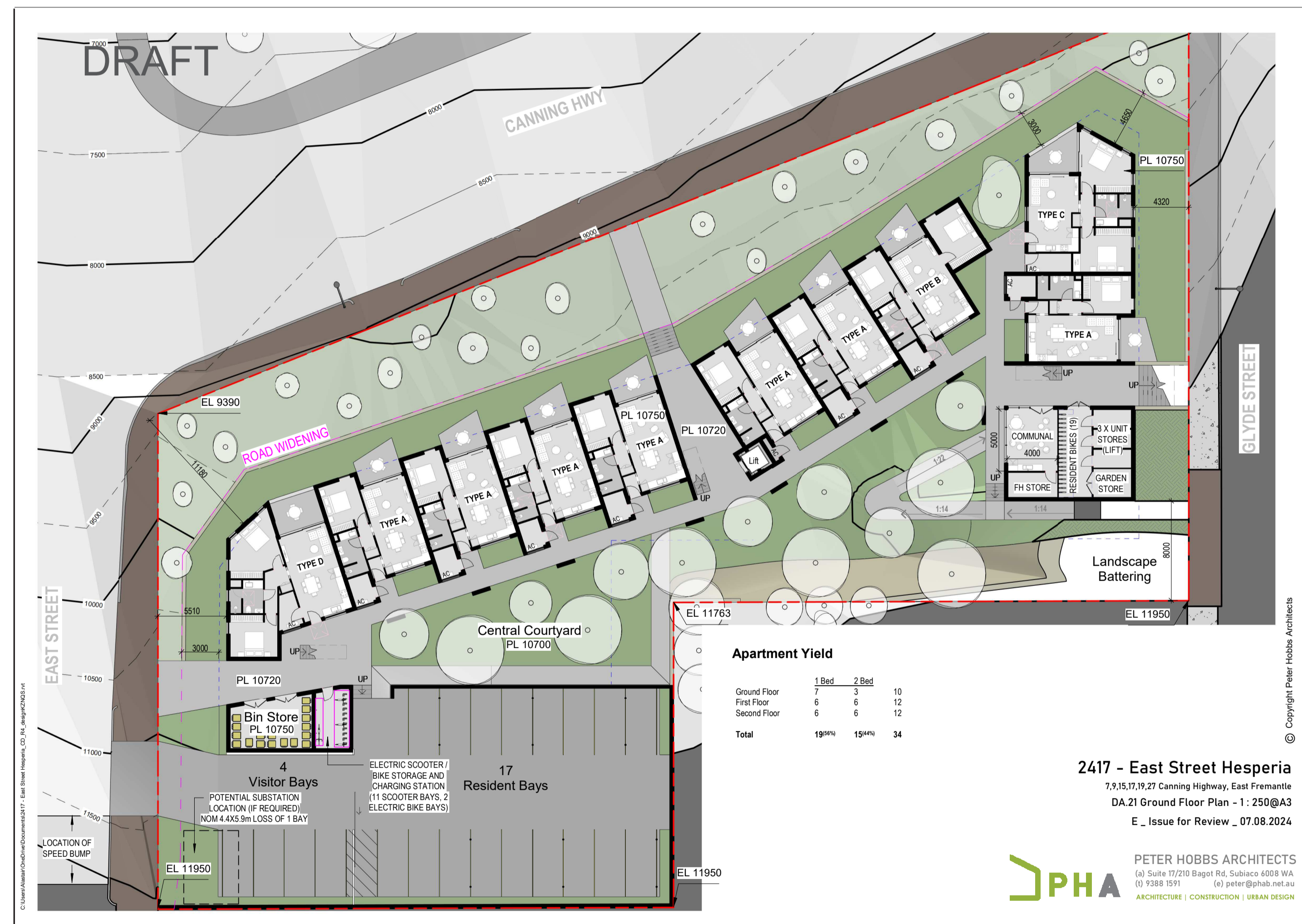
Indicative design of entrance on Canning Highway

Proposed Development East Street, East Fremantle

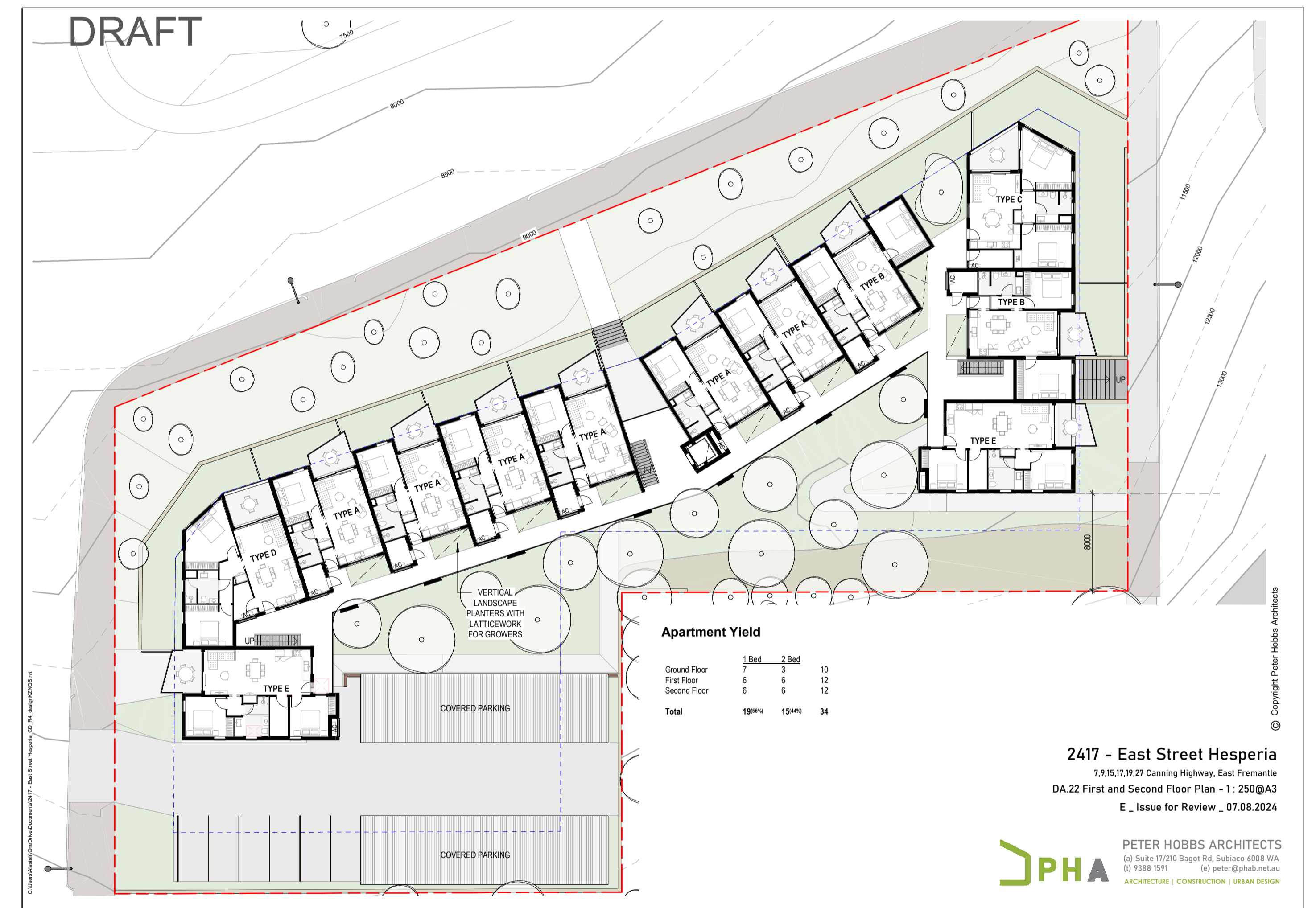
These images are Draft and may be subject to change.

Changes may be made to the design and layout prior to the development application being lodged with the Western Australian Planning Commission by early 2026.

The designs and layouts may be subject to change during the development application process.



Indicative site plan of ground floor



Indicative site plan of first and second floor

Want to stay up to date?

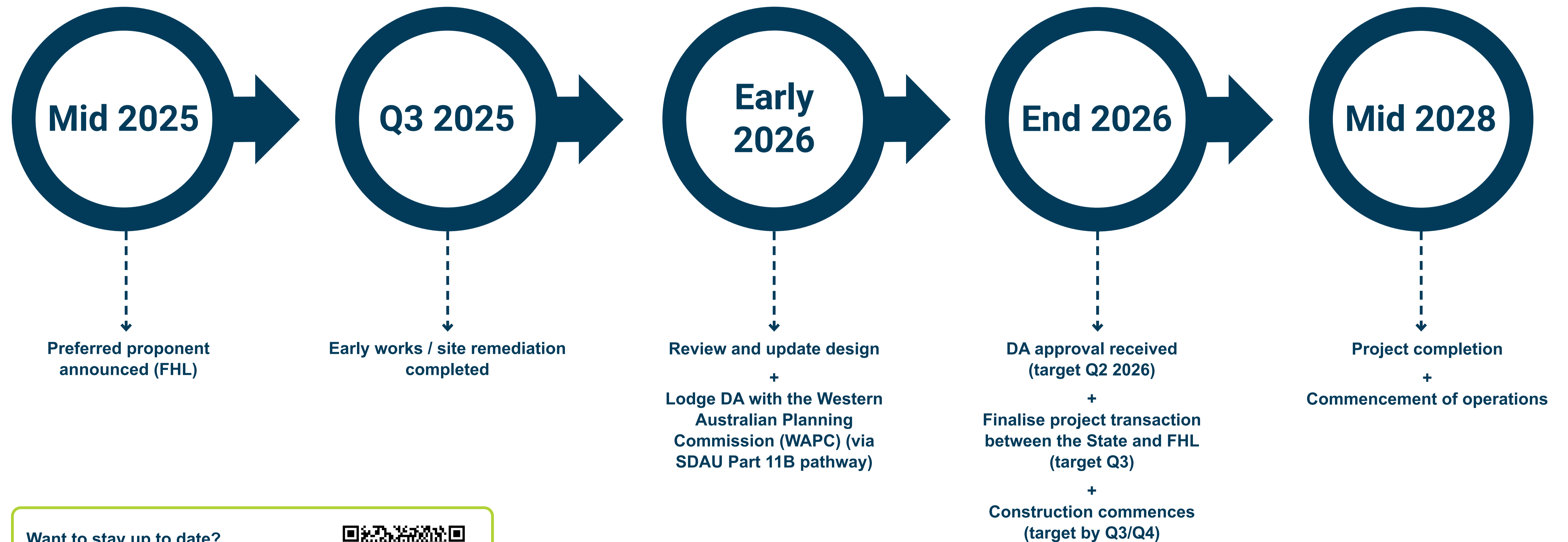
You can register for project updates on the Foundation Housing website. Just scan the QR Code or visit <https://www.foundationhousing.org.au>





Proposed Development East Street, East Fremantle

Targeted key project milestones



Want to stay up to date?

You can register for project updates on the Foundation Housing website. Just scan the QR Code or visit <https://www.foundationhousing.org.au>

