



foundation
HOUSING

Evolution 2025-2030

— Building on 40 years of impact, growing communities for generations to come —

ACKNOWLEDGEMENT OF COUNTRY

Foundation Housing acknowledges the Traditional Custodians of the Country on which we work and live and recognises their continuing connection to land, waters and community.

In particular, the Whadjuk people of the Noongar nation in Perth, the Yawuru people in Broome and the Kariyarra people in South Hedland. We pay our respect to them and their cultures and to Elders past, present and emerging.

“Mia Danjoo - Home Together” is a work by Buffie Punch commissioned as part of Foundation Housing’s Reconciliation Strategy. This artwork depicts the journey of our tenants and residents. The yarning circles represent homes, and the pathways join the homes together to showcase the support from the organisation to manage and sustain positive tenancies. The lines surrounding the artwork represent the journey and their continuing pathways. U-Shaped elements throughout the artwork illustrate the collaborative spirit between the tenants, residents, and community that drives meaningful results.



BUILDING ON 40 YEARS OF IMPACT

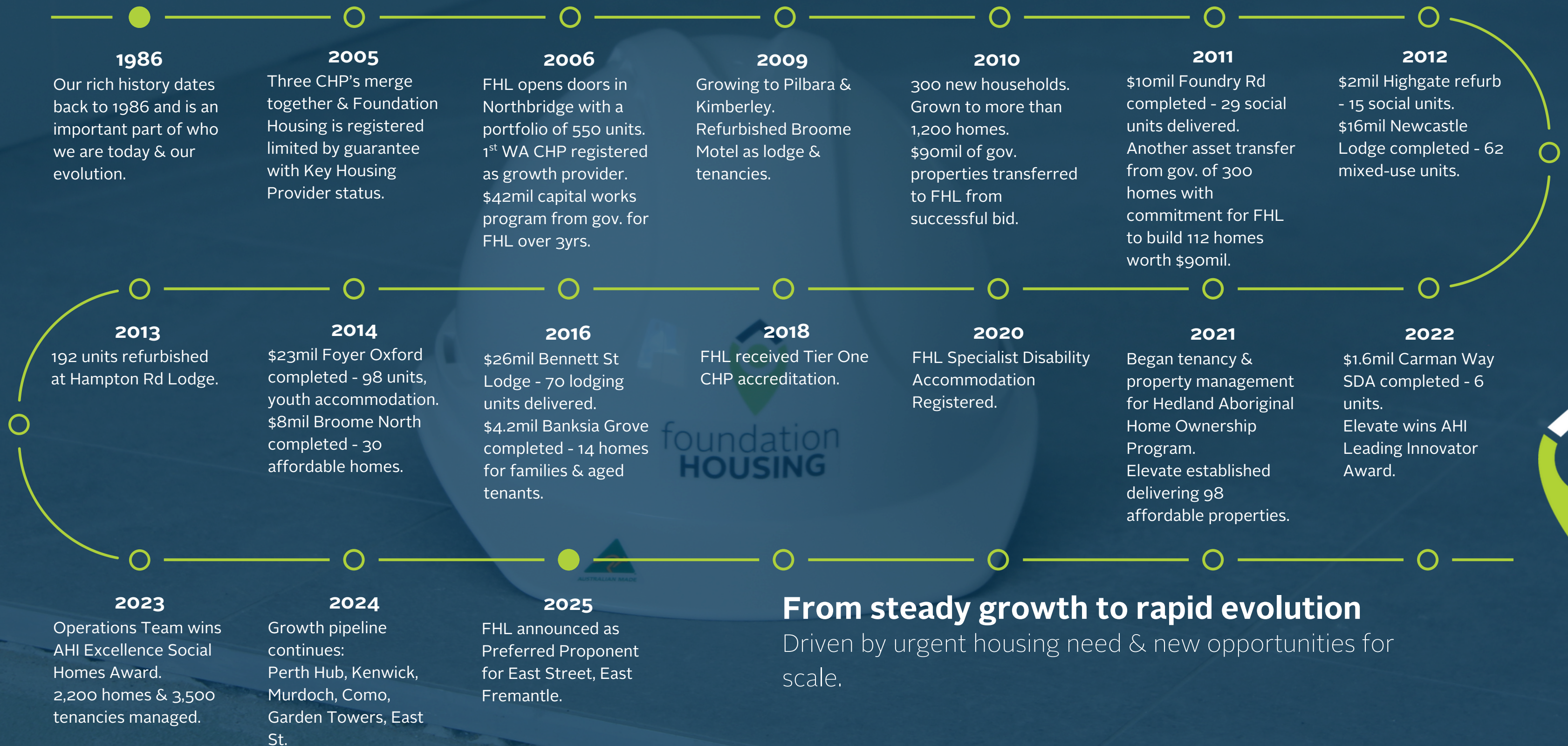
For over 40 years, Foundation Housing has been dedicated to creating homes, communities, and opportunities for those who need them most.

As we embark on the next phase of our journey, our new strategic plan - Evolution - builds on this legacy, driving innovative, sustainable, and community-focused housing solutions.

With support from initiatives like the Housing Australia Future Fund (HAFF), we are delivering transformative projects including Murdoch; and Como redevelopments, and the Kenwick SDA, with more developments planned to meet growing demand.

This plan reflects our commitment to not only providing homes but also fostering connected, resilient communities that inspire independence, opportunity, and pride.

OUR JOURNEY & GROWTH: GRASSROOTS TO SECTOR *leader*



From steady growth to rapid evolution

Driven by urgent housing need & new opportunities for scale.



Our Mission, Purpose & Vision

Mission

To provide affordable housing options for Western Australians on low to moderate incomes.

Purpose

To improve people's lives with safe and secure housing.

Vision

A *home* for everyone.

A photograph of three people sitting in a circle on white chairs, engaged in a conversation. On the left is a woman with blonde hair wearing a teal blazer and pants. In the center is a young woman with long brown hair and glasses, wearing a pink t-shirt and blue jeans. On the right is a man with dark hair and glasses, wearing a dark blue blazer over a light blue shirt. They are all smiling and looking towards each other. The background is a plain white wall with a door on the right.

-OUR STRATEGY STATEMENT-

As a sector leader, deliver positive tenancies across the housing continuum to support those in housing need, while strategically and sustainably diversifying and growing our portfolio by 2,000 dwellings built or committed in our pipeline by 2030.

A Home **FOR EVERYONE**



-Our Goal-

2,000

DWELLINGS

BY 2030

Manage & Sustain *Positive* Tenancies

Key Initiatives

Expand Positive Tenancies Framework

Integrate across all areas of the business

Formalise External Partnerships

Enhance support & services for tenants

Grow Regional Engagement

Build community connections & support networks

Raise Awareness of Our Impact

Demonstrate our unique value in tenancy outcomes

EMPOWERED

We have a positive resident-centred culture, based upon values of inclusion, equity, respect, and dignity.

CONNECTED

We connect with our tenants and provide opportunities for them to engage with us, each other and their broader community.

STABLE

Our tenants are offered suitable homes, at rent levels that are affordable and sustainable.

Positive Tenancy Framework

EQUIPPED

Our tenants are offered capacity building opportunities to help maintain their tenancy.

SAFE

We maintain our properties and work alongside residents to achieve safe and secure tenancies for residents, FHL staff and the wider community.

HEALTHY

We offer support to residents when health and wellbeing may impact their ability to sustain a tenancy.

Deliver Our *Growth* Strategy

Key Initiatives

Partner of Choice

Strengthen relationships with government & key stakeholders

Sustainable Portfolio

Build a long-term, diverse, & financially resilient housing mix

Aggregated Funding

Identify & secure capital & debt sources for growth

Stakeholder Engagement

Engage prospective partners with a clear, strategic approach.





Business *Excellence*

Key Initiatives

Safety First

Embed a culture that prioritises safety across the organisation

Workforce & Structure

Optimise organisational design, workforce capability, & ways of working to support growth

Strategic Risk Management

Define risk appetite, monitor key risks, & strengthen governance

Fit-for-Purpose Systems

Implement robust IT systems to enable efficiency & growth

ESG Measurement

Establish baseline metrics and track environmental, social, & governance performance

Our Values

Our principles guide how we deliver homes, support communities, & shape the future of housing.

Caring

We care for others and display empathy, fairness and respect.

Solutions Focused

We work together to find solutions that benefit our people and customers.

Honest

We act with integrity and own our decisions.



For more information on our strategic plan & projects



Phone

08 9422 0700



Email

communications@foundationhousing.org.au



Website

www.foundationhousing.org.au

A Home **FOR EVERYONE**